

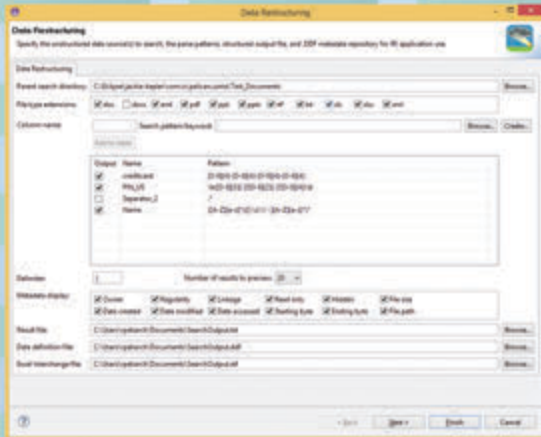
# Introducing the Enterprise Edition of

# CellShield

Data Masking Add-In for Excel

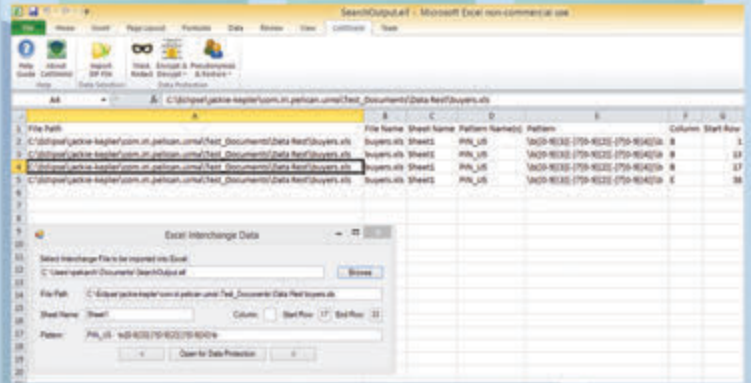
Profile and protect PII in Excel spreadsheets with intuitive point and click interfaces

## SEARCH



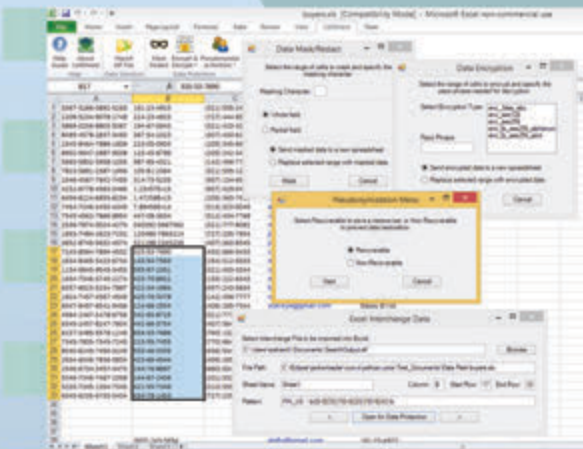
Use the dark data discovery and "restructuring" wizard in the IRI Workbench to scan for data value patterns, with or without associations, across every .XLS and .XLSX spreadsheet on every drive on your network in parallel.

## REPORT



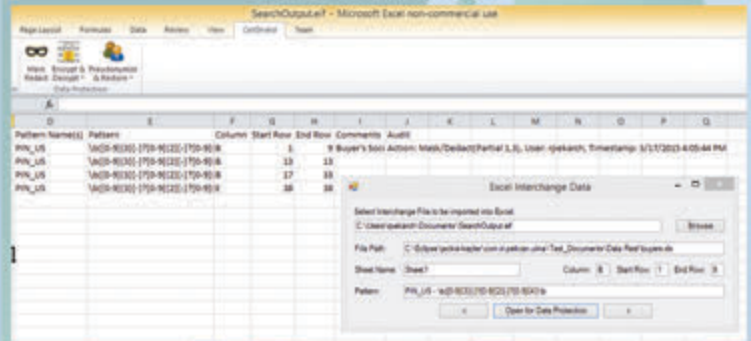
Import the search results into a profile and remediation worksheet specifying the discovered cell ranges. Use the interchange (action) dialog to move through the report's ranges and open them directly for CellShield protections.

## PROTECT



Use the built-in CellShield functional dialogs for encryption, masking, or pseudonymization for each pre-highlighted range you need to protect, based on your business rules and need for security, reversibility, and appearance.

## AUDIT



After each CellShield action is taken, an automatic log entry for each range updates the main report -- specifying what action was taken, when, where, and by whom -- to verify compliance with data privacy laws.