

The Voracity & AnalytiX DS Platform Combination

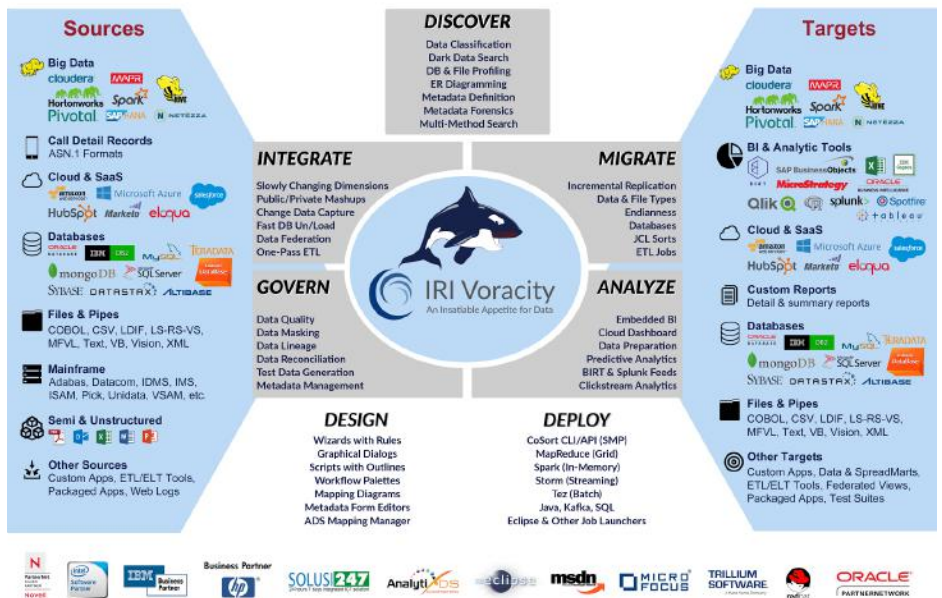
Total Data and Metadata Management for the Modern Enterprise

Benefit Summary

The developers behind the best-in-class data management (IRI) and metadata management (AnalytiX DS) software have bridged their technology stacks to give modern organizations a single, integrated solution for their:

- **Data Integration Teams** who want affordable, lightning-fast big data and ETL processing, *plus* mapping management, metadata-driven automation, and automated conversion of legacy ETL jobs.
- **Business Users** who need embedded BI or fast data blending for analytics, *plus* release management for their reporting or data preparation/ETL jobs.
- **Regulatory & Compliance Officers** who require versatile data masking and robust test data generation, *plus* proactive PII discovery, and automated test case management and validation.
- **Governance & Information Architects** who expect multiple data acquisition and job design options, *plus* identity access and workflow management, metadata lineage, and impact analysis.

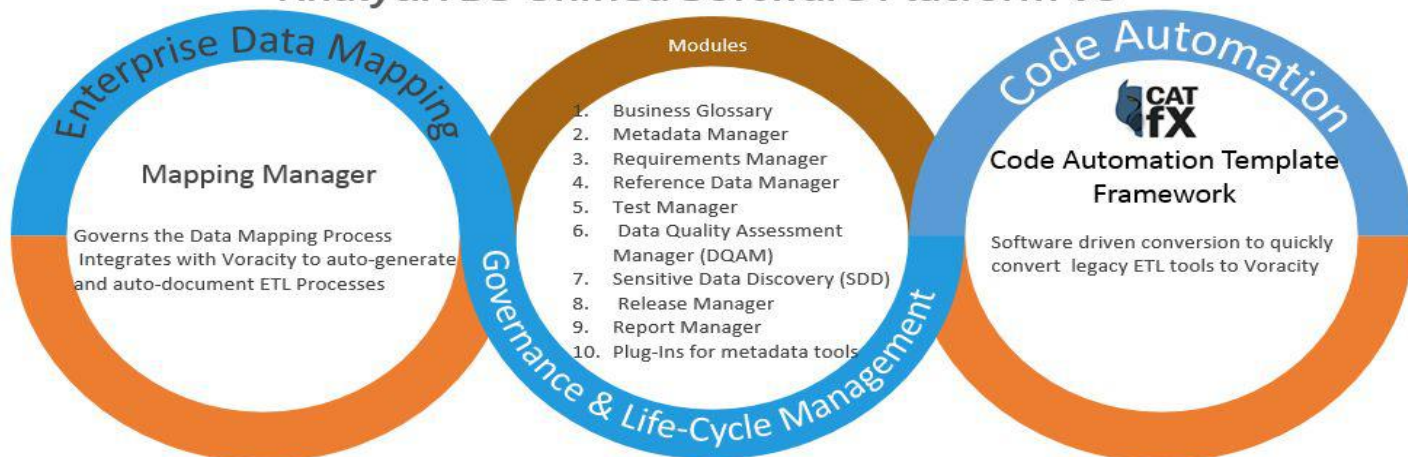
IRI Voracity has just become the data integration industry's fastest, and most affordable, modern ETL and data curation platform. Voracity supports data discovery, integration, migration, governance, *and* analytics in Eclipse. Voracity uses CoSort or Hadoop engines interchangeably for speed in volume. Voracity is also a shareable solution stack for DW architects, BI users, DBAs, developers, and compliance officers who want to overcome the performance, functional, design, and financial challenges around EDW, data mining, data protection, and testing inherent in legacy ETL and specialty tools.



Thanks to API-level integration between Voracity and the AnalytiX DS Unified Platform, users of either environment can now have cloud-based governance, mapping management, legacy ETL job conversion, and metadata driven automation. Together these stacks automate, accelerate, standardize, and govern all phases of the data integration lifecycle, and increase efficiency, collaboration, and data quality for IT and business users who work with metadata. And they do it more cost effectively than any other system.



AnalytiX DS Unified Software Platform v8



METADATA MANAGEMENT & GOVERNANCE

When used with IRI Voracity, AnalytiX DS (ADS) platform modules deliver superior metadata management for data warehouse, data governance, and related data lifecycle management operations. Together, the platforms can scan, consolidate, manage, and exploit data and metadata across the organization.

The industry's first patented "pre-ETL" enterprise data mapping solution helps users achieve regulatory compliance via comprehensive governance and data lineage features. Scan, consolidate, and govern metadata across the organization in a collaborative environment.

BUSINESS GLOSSARY

Create, manage, and collaborate on a common business vocabulary across the organization. Support regulatory compliance, data governance, and data stewardship initiatives by defining business terms and building lineage maps that show semantic definitions related to physical data dictionaries, data mappings, lineage of federated data, and other business artifacts such as requirements, test cases, and more.

- Manage vocabulary terms and owners
- Build end-to-end lineage and relationship views with meaningful business terms
- Automate discovery of relationships to quickly link semantic business glossary definitions to policy, physical data dictionaries, functional requirements, mappings test cases, Voracity data classes, etc.
- Support rich media: sound, video, and image files

REQUIREMENTS MANAGEMENT

- Manage requirements and specification documents from an enterprise platform
- Link requirements to mappings, test cases, business processes, and owners
- Generate enterprise-wide traceability matrix between requirements, mappings test cases, and business glossaries

CODESET & REFERENCE DATA MANAGEMENT

- Scan, manage, validate, and govern code-sets and reference data across the organization
- Link code-sets to ETL mappings and processes
- Publish valid code values to dev, test, and production environments
- Govern user-defined reference data and code-sets, and link to requirements and data mappings

TEST CASE AUTOMATION MANAGEMENT

- Reduce test cycles and costs by auto-generating reusable test SQL, mapping, and ETL/ELT process cases, and automating execution and population of test results for source-to-target mappings and metadata
- Consolidate test management through the documentation of test cases, test steps, test SQL, and test results
- Enable test case and test SQL generation in a purpose-built module for testing data mappings and ETL processes
- Integrate with leading testing tools like HP-ALM and IRI RowGen test data generators inside IRI Voracity



DATA QUALITY ASSESSMENT

- Standardize and execute a formal data quality assessment methodology
- System-generate processes for creating and governing data quality report cards (e.g., A,B,C,D,F, or 98, 87, 65% accuracy of data and valid values)
- Identify valid and invalid values, specify remediation rules, and generate Voracity “fix-scripts” to correct the data
- Use an integrated workflow and approval process
- Automate (schedule) data quality assessment
- Identify stakeholders and data stewards accountable for the quality reviews and sign-offs
- Comply with big data performance benchmarks on data sets exceeding one billion rows

RELEASE MANAGEMENT

- Create, validate, and map releases, along with all release artifacts, such as Voracity ETL jobs
- Leverage integrated workflow and approvals
- Generate release plans
- Manage release calendars with yearly, monthly, weekly and daily views
- Promote mappings between environments automatically

SENSITIVE DATA DISCOVERY

- Define, score, and locate PII according to rules
- Use built-in IRI FieldShield functions in Voracity to mask discovered PII on an ad-hoc or rule basis

METADATA-DRIVEN MAPPING MANAGEMENT

- Use the data integration industry's first patented “Pre-ETL” source-to-target data mapping solution
- Manage mapping versions and changes
- View data lineage and impact analysis, and meet the compliance objectives of industry regulators

AUTOMATION AND CODE GENERATION

Use built-in SDKs to customize code generation for specific requirements, template driven ETL standardization and automation, or auto-documentation of procedural code, and view data lineage. Use the automation framework, and repeatable processes and solutions, to minimize manual tasks, accelerate delivery, and reduce rework.

ETL & ELT Automation

- Generate Voracity ETL code using a truly metadata-driven approach
- Standardize ETL job design patterns for Voracity and other ETL tools based on your standards and best practices
- Reverse engineer ETL jobs into mapping documents, and publish transformation logic
- Reverse engineer legacy code and SQL procedures, shell scripts, COBOL and Java programs, and much more via the CATfX Automation Marketplace

Data Vault Automation

Pre-built and custom Data Vault Code Automation Templates (CATfX) approved by Dan Linstedt automate code-generation for the Data Vault Rapid EDW methodology for Stage, HUB, LINK, Satellites and Data Marts. Building Data Vaults, Business Vaults, and Data Marts has never been faster. Use Data Vault CAT bundles to generate:

- Data Vault Hub, Link, Satellite, PIT, and Bridge code generation for almost all tools and scripts
- Data Vault Table Structures
- Data Vault data mappings in Mapping Manager
- Data Vault ETL Processes
- Data Vault DBMS Views
- Data Vault test cases and test SQL



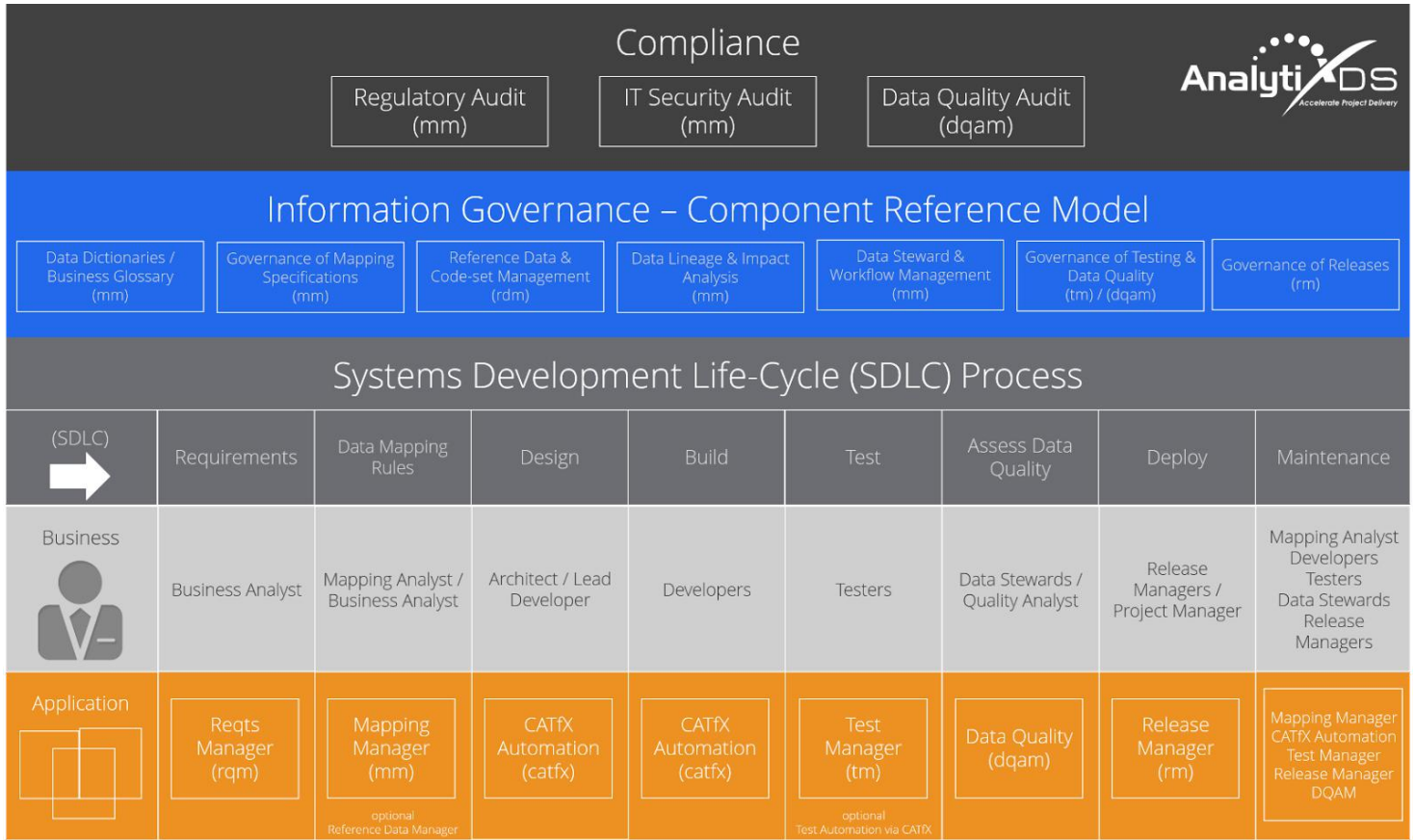
Other

- Generate & auto-document SQL code and stored procedures
- Auto-document Voracity, Visual Basic, COBOL, Java, and other code, and view lineage
- Generate DDLs from metadata to build data warehouses and data marts
- Create templates to connect to homegrown solutions



COMPONENT REFERENCE MODEL

The Enterprise Data Management suite of modules also accelerates delivery and governs IRI jobs and other software development lifecycle (SDLC) processes in Voracity's Eclipse GUI, IRI Workbench.



Getting Started

The IRI Voracity and AnalytIX platforms together address all phases of the data integration lifecycle. Their flexible licensing models allow you to choose only the components you need to meet your specific goals.

If you already use a legacy ETL tool, data governance system, or other data-centric software product, tell IRI and AnalytIX DS what it is, and ask about a POC around automatic re-platforming as you assess your ROI. We will be happy to help you understand the technical aspects of legacy tool conversion and how much money you will save.

Contact Us

Phone

IRI: 1-800-333-SORT

ADS: 1-800-656-986

Email

info@iri.com

info@analytixds.com

Web

www.iri.com

www.analytixds.com

