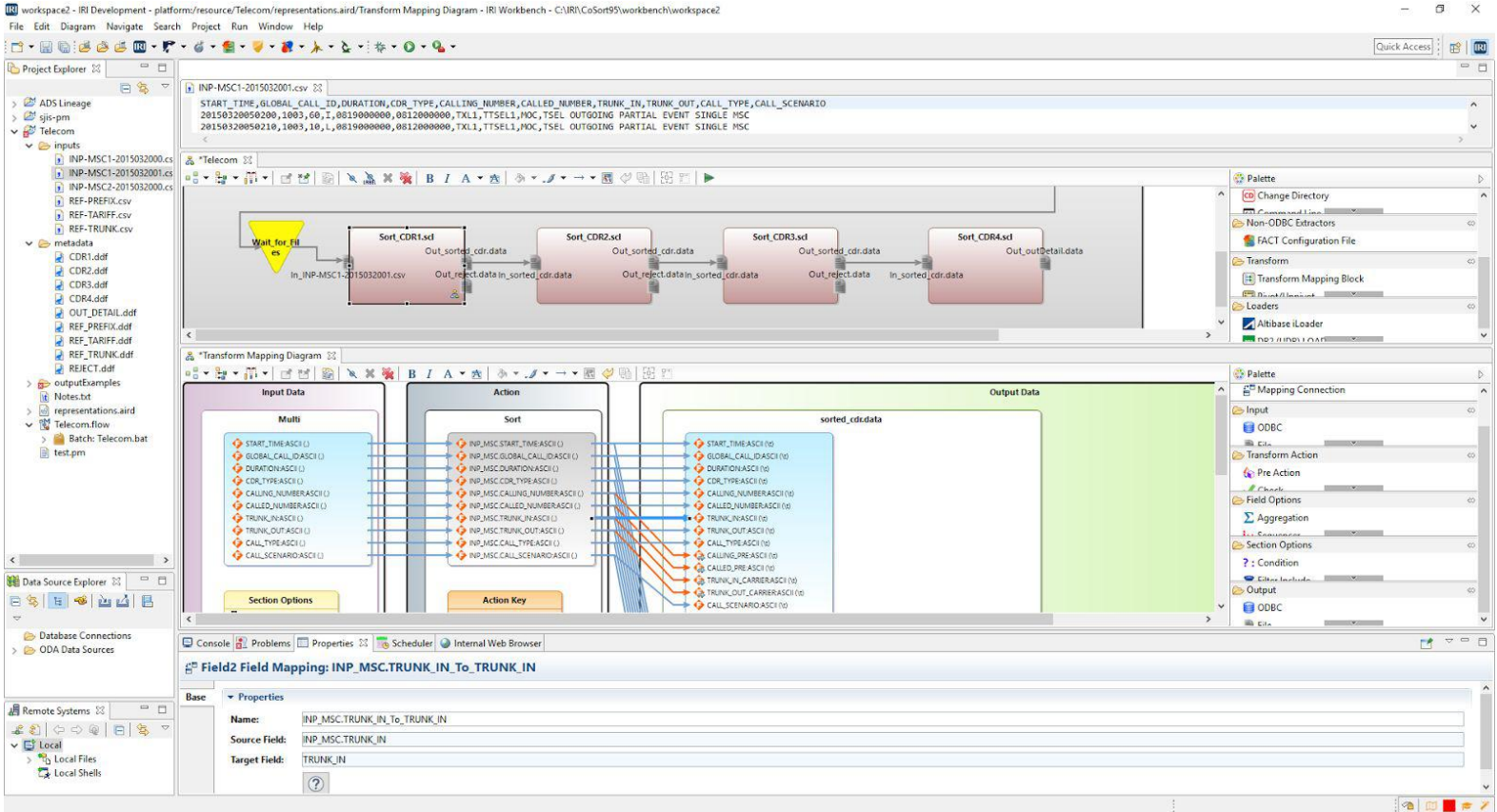


Consider this [IRI Voracity](#) ETL workflow sample from the telecom industry,



IRI Workbench graphical IDE for Voracity (and all IRI software), built on Eclipse Neon. The top panel shows a CSV data source layout used below, followed by the second half of the workflow, and then a selected transform mapping diagram.

Following are selected data lineage images produced in the [optional Mapping Manager environment](#) for Voracity from Analytix DS. These modules run in their affordable cloud-based app you can use right from an IRI Workbench browser.

Table Level Lineage

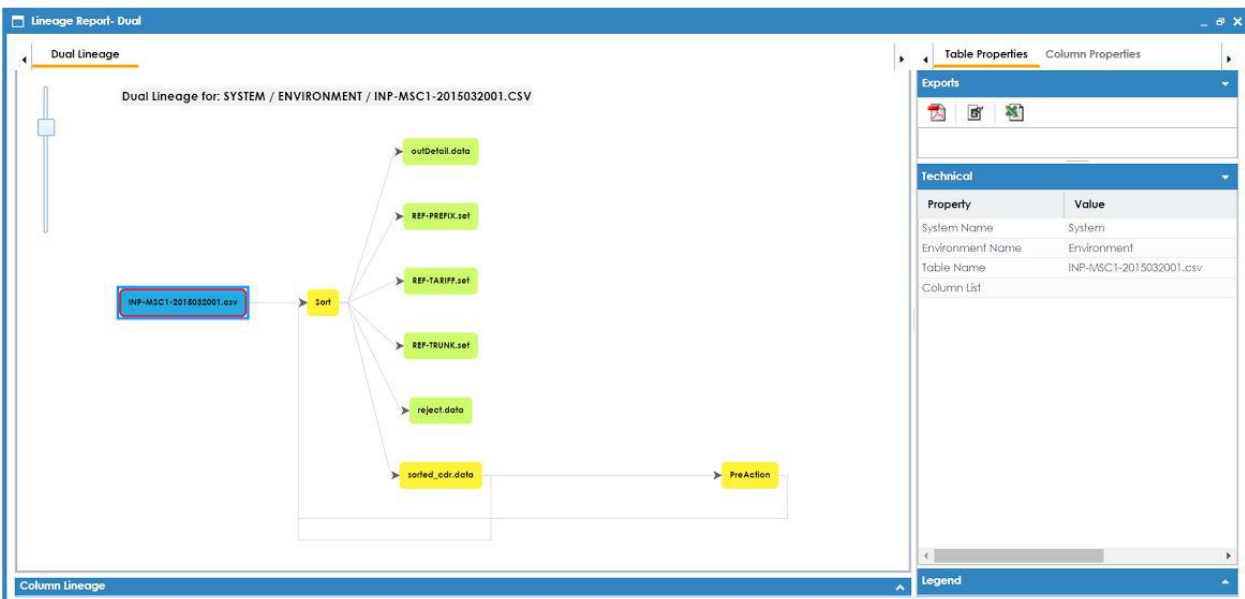
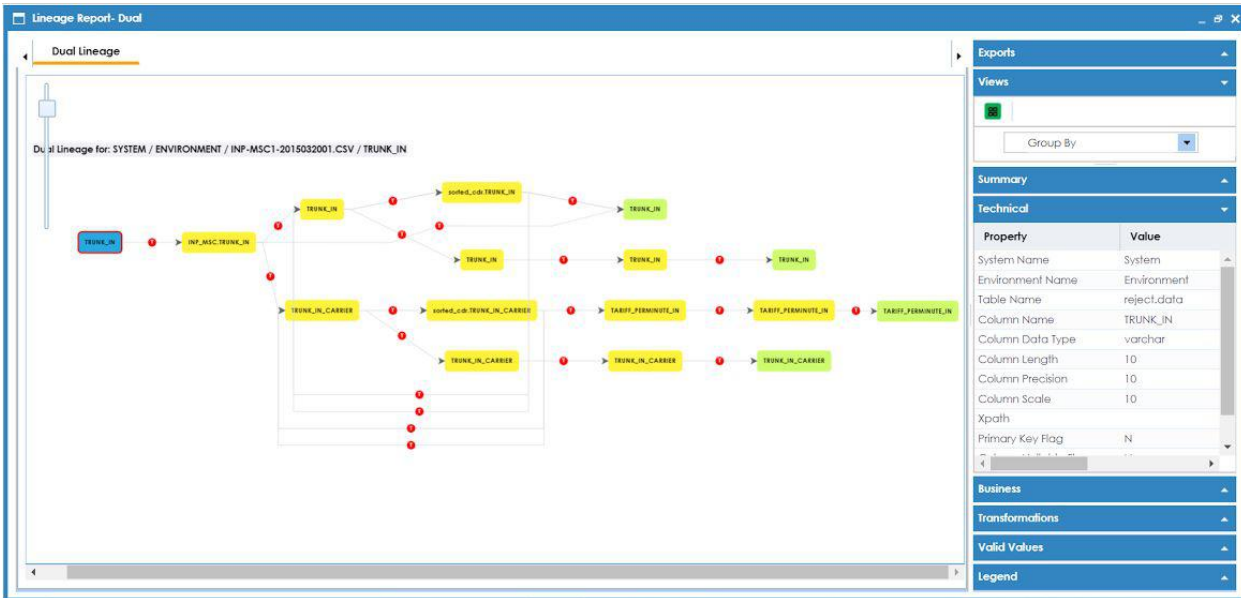


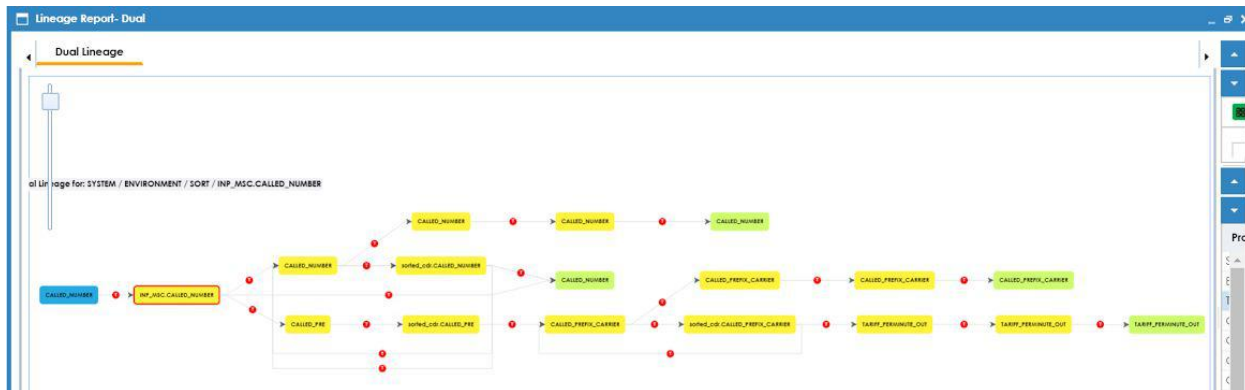
Table level lineage for the INP-MS-C1-2015032001.csv Source file referenced in the above mapping.

Column Level Lineage #1 of 2



Column level lineage for the TRUNC_IN column from the INP_MSC1-2015032001.csv Source file.

Column Level Lineage #2 of 2



Column level lineage for the CALLED_NUMBER column from INP_MSC1-2015032001.csv.

Impact Analysis

Impact Analysis Report for CALLED_NUMBER

ColumnName: CALLED_NUMBER

Summary - Direct Impact: 3 As Source, 3 As Target

Summary - Indirect Impact: 0

Audit Information:

#	Project Name	Mapping Name	Target Information	Table	Environment	System	Business Rule
1	Lanny_test	Sort_CDR2	sorted_cdr.CALLED_NUMBER	Sort	Environment	System	
2	Lanny_test	Sort_CDR3	sorted_cdr.CALLED_NUMBER	Sort	Environment	System	
3	Lanny_test	Sort_CDR4	CALLED_NUMBER	PreAction	Environment	System	

#	Project Name	Mapping Name	Source Information	Table	Environment	System	Business Rule
1	Lanny_test	Sort_CDR1	INP_MSC1.CALLED_NUMBER	Sort	Environment	System	
2	Lanny_test	Sort_CDR2	sorted_cdr.CALLED_NUMBER	Sort	Environment	System	
3	Lanny_test	Sort_CDR3	sorted_cdr.CALLED_NUMBER	Sort	Environment	System	

Impact Analysis report run on the CALLED_NUMBER column from a Voracity (CoSort) sort task component. Additional impacts will be displayed after further mapping links are confirmed. Contact voracity@iri.com for info.