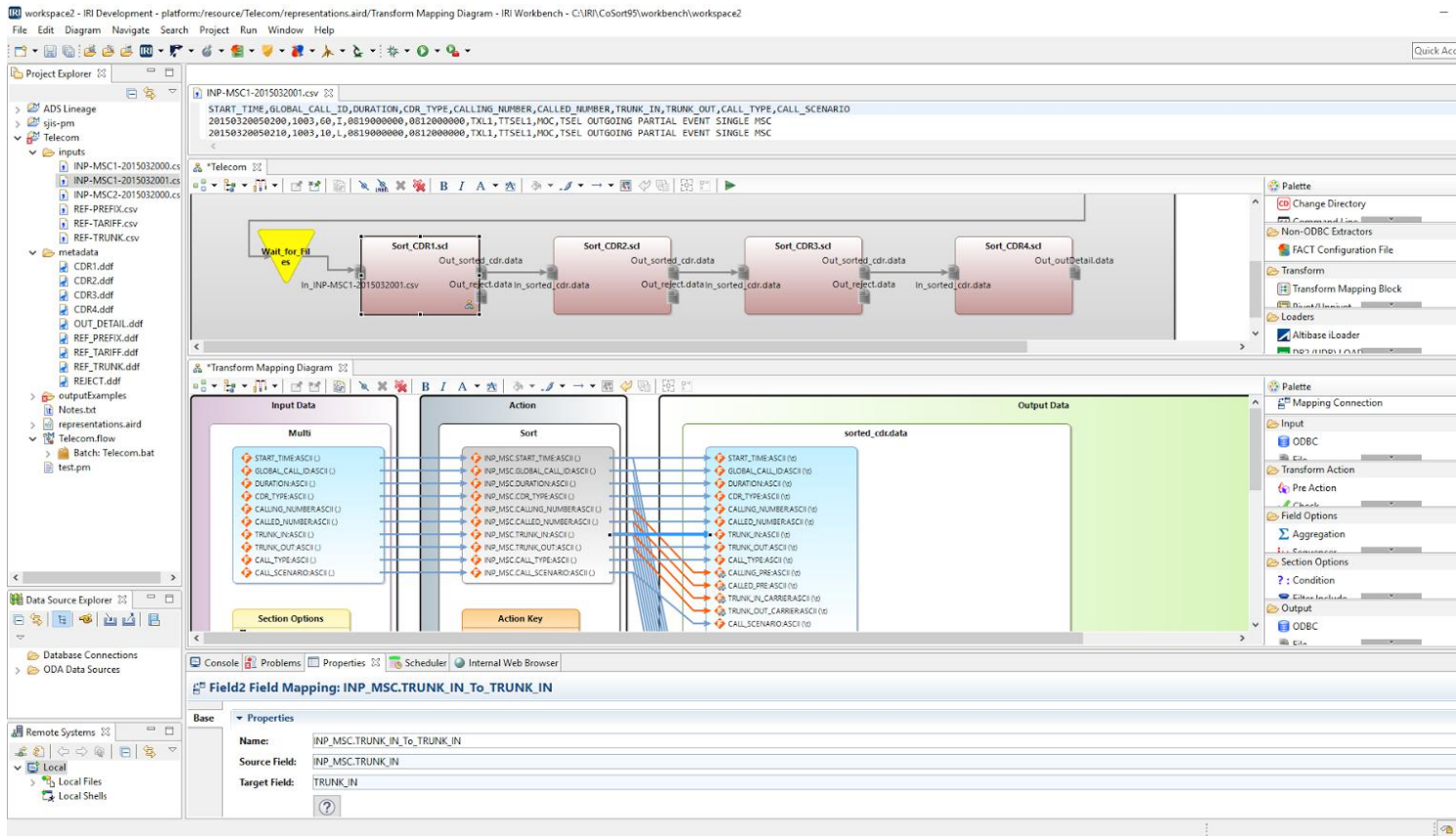


# Voracity Graphical Lineage & Impact Example

Consider this [IRI Voracity](#) ETL workflow sample from the telecom industry,



[IRI Workbench](#) graphical IDE for Voracity (and all IRI software), built on Eclipse Neon. The top panel shows a CSV data source layout used below, followed by the second half of the workflow, and then a selected transform mapping diagram.

Following are selected data lineage images produced in the [optional Mapping Manager environment](#) for Voracity from AnalytiX DS. These modules run in their affordable cloud-based app you can use right from an IRI Workbench browser.

## Table Level Lineage

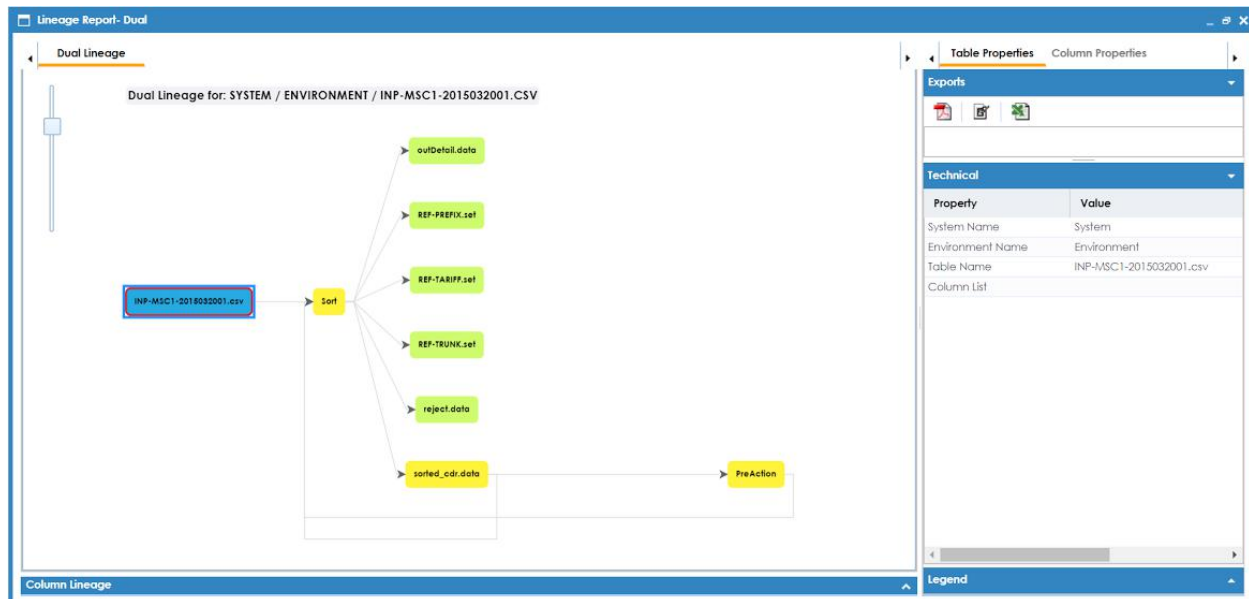
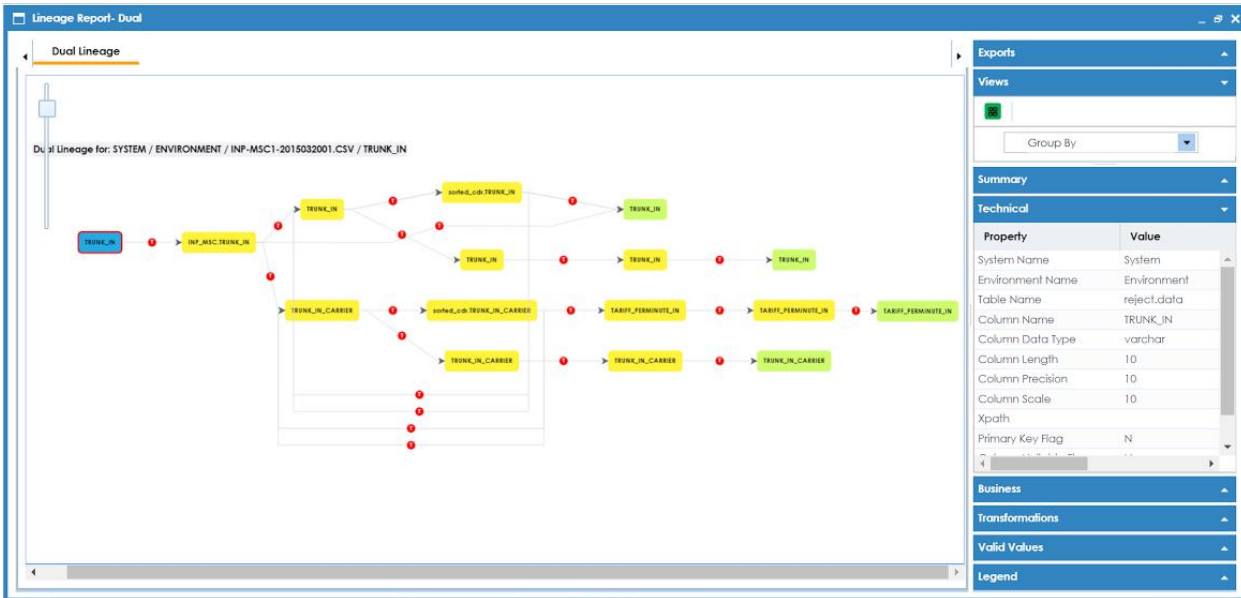


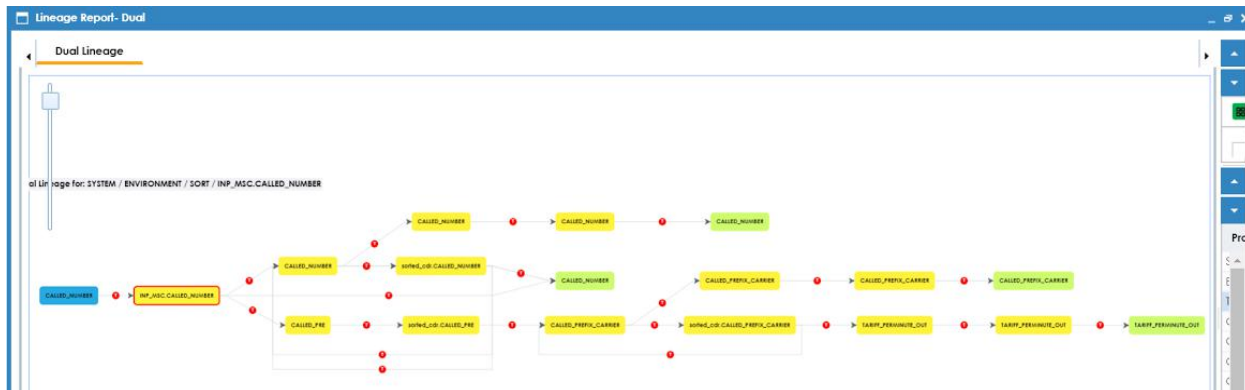
Table level lineage for the INP-MSC1-2015032001.csv Source file referenced in the above mapping.

## Column Level Lineage #1 of 2



Column level lineage for the TRUNC\_IN column from the INP-MSC1-2015032001.csv Source file.

## Column Level Lineage #2 of 2



Column level lineage for the CALLED\_NUMBER column from INP-MSC1-2015032001.csv.

## Impact Analysis

Impact Analysis Report

ColumnName: CALLED\_NUMBER

Summary - Direct Impact

Summary - Indirect Impact

Audit Information

#	Project Name	Mapping Name	Source Information	Table	Environment	System	Business Rule
1	Lanny_test	Sort_CDR1	INP_MSC.CALLED_NUMBER	Sort	Environment	System	
2	Lanny_test	Sort_CDR2	sorted_cdr.CALLED_NUMBER	Sort	Environment	System	
3	Lanny_test	Sort_CDR3	sorted_cdr.CALLED_NUMBER	Sort	Environment	System	

Impact Analysis report run on the CALLED\_NUMBER column from a Voracity (CoSort) sort task component. Additional impacts will be displayed after further mapping links are confirmed. Contact [voracity@iri.com](mailto:voracity@iri.com) for info.